



SPK SYNTAX® connectors are available in 4 and 8 pin configuration for speaker array connections and are fully intermateable with CA-COM connectors, commonly used by many speaker enclosure manufacturers. The design utilises the same key features of SVK Series and are supplied as standard with the rubber covered locking ring and with gold plated solder contacts. The SPK speaker series, ensures long term reliability through the robust construction and addresses the short comings of the more traditional Industrial and Military connectors when used in touring applications.

- Rubber Coated Coupling Locking Rings
- Machined Backshells
- "First Make Last Break" earthing contacts
- Thick Wall sections
- Roller Bearing Coupling Pins
- IP67 watertight construction when mated
- Compliant Integral Grounding System

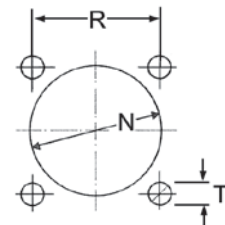
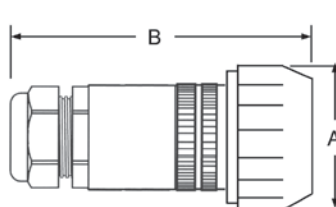
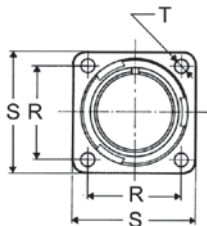
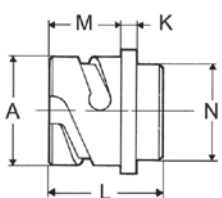
## CONNECTOR DIMENSIONS (mm) 4 pin (PG13,5) & 8 pin (PG 21)

	PANEL							
	A	K	L	M	N	R	S	T
	+0			+0,4				H13
	-0,15	±0,2	±0,3	-0	max.	±0,1	±0,3	
4 pin	30,8	4	34,3	19	25,6	27,0	35	3,2
8 pin	37,4	4	34,3	19	32,2	31,8	41	3,2

terminal	INLINE		
	A	B	Pin
standard locking ring	37	106	4
standard locking ring	43	109	8
rubber locking ring	49	110	4
rubber locking ring	56	112	8
ramps	34	108	4
ramps	40	110	8

## CUT-OUT 4 & 8 pin

	R	N	T
		+0,4	
	±0,2	-0	±0,2
4 pin	27,0	25,8	3,2
8 pin	31,8	32,4	3,2



## CONTACTS

The male and female are machined by high conductive copper alloy and could be supplied gold or silver plated.

Voltage rating AC	Voltage rating DC	Max current	Rated current	Potential drop	Dielectric Strength	
					Test voltage	Min. Flashover
1250 V	900 V	41 Amps	23 Amps	63 mV	2800 Vac RMS	3600 Vac RMS

	<b>GOLD PLATED</b>	
<b>MALE</b>		<b>FEMALE</b>
	<b>SILVER PLATED</b>	

**Part Number explanation: see page 10**

# SPK SPEAKER

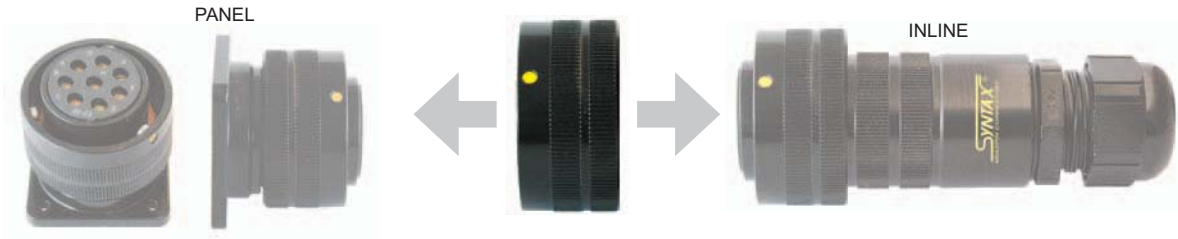


**Part Number explanation: see page 10**

## LOCKING RING

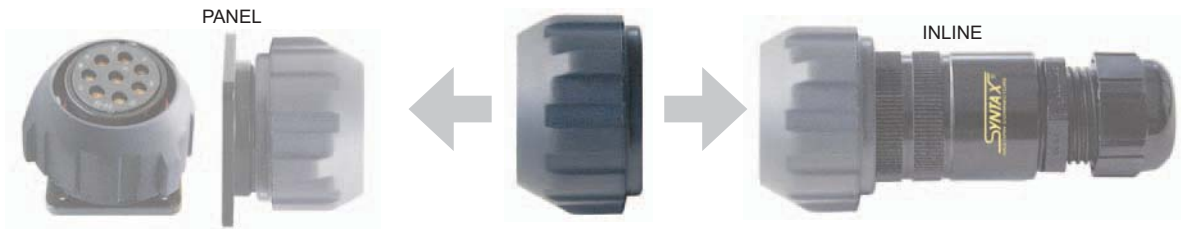
### STANDARD

Standard aluminium arctic grip locking ring for SPK connectors series.



### RUBBER COATED

Rubber coated locking ring for ease of coupling even with gloved hands. For SPK connectors series.



## CABLE GLANDS

