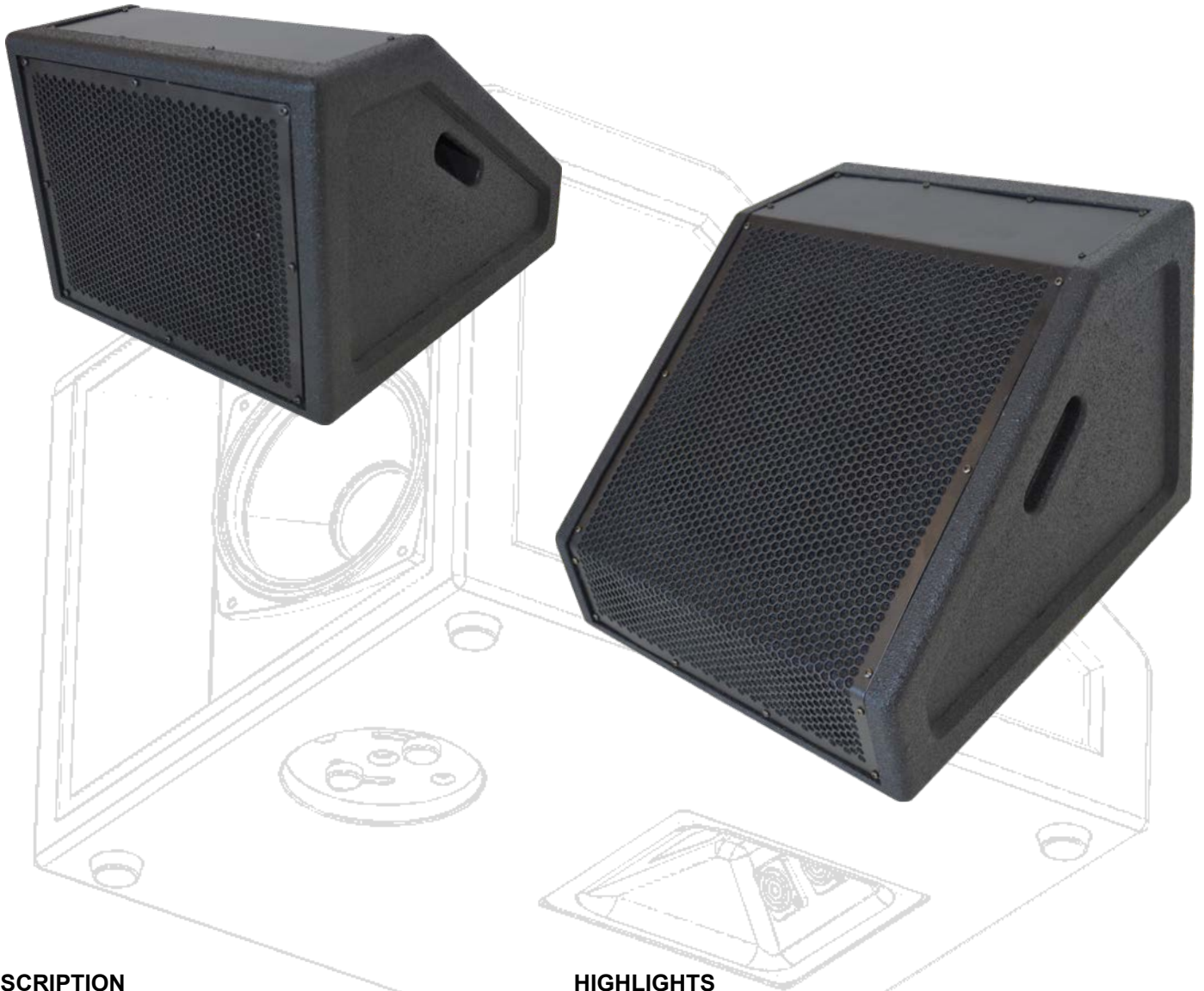


# M103F - Stage monitor with built-in dedicated frontfill

Powerful 10"/1,3" neodymium coaxial stage monitor,  
with innovative and unique built-in separate horizontally aimable 6,5"/1" neodymium coaxial front-fill.



## DESCRIPTION

The M103F is a unique and innovative stagemonitor, next generation with built-in separate frontfill, for a clean and clutter-free stage, where usually, the front-fills compete with the stagemonitors for space on stage, giving an overall negative impression.

With the M103F there is no need for external front-fills! In the front of the speaker is a separate 6,5"/1" coaxial speaker hidden behind the grille, with a hardware under the speaker for aiming the front-fill +/-120° horizontally.

Speakon connectors in the bottom for discrete cabling, with 1+/1- powering the 500W, 10"/1,3"-coaxial passive stage-monitor, and 2+/2- powering the 300W, 6,5"/1" coaxial neodymium front-fill.

Two separate 8 ohm passive crossovers for individual control of stage monitor and front-fill.  
FIR-filters presets available in all our 19" systems DSP-amplifiers and the DSP4800 system processor.

## HIGHLIGHTS

- Stage-monitor with 500W, 10"/1,3" coaxial
- Built-in, unique and innovative front-fill, 300W, 6,5"/1" coax
- Front-fill aimable +/- 120° horizontally
- Separate passive crossover for each speaker
- Neutrik NL4, 1+/1- powering the stage monitor
- Neutrik NL4, 2+/2- powering the front-fill
- Two linked Neutrik NL4 connectors hidden under the speaker
- Discrete cabling with input and link out under the speaker
- 8 ohm components
- FIR-filters available in our 19" system DSP-amplifiers
- FIR filters available in the DSP4800 System processor
- Hardware under the speaker for aiming the front-fill horizontally
- Allows for any 4x4 speaker cable to fit under the speaker
- New design with two handles
- Case with two or four monitors available
- Very high sensitivity and max SPL
- Stagemonitor: 100dB sensitivity, 70° nominal dispersion
- Front-fill: 95dB sensitivity, 70° nominal dispersion
- Max SPL stage monitor: 130dB
- Max SPL front-fill: 123dB

# M103F - Stage monitor with built-in dedicated frontfill

Powerful 10"/1,3" neodymium coaxial stage monitor, with innovative and unique built-in separate horizontally aimable 6,5"/1" neodymium coaxial front-fill.

